

Summer Placement details for the batch 2019-21

Highest Stipend **Rs. 3,00,000**

Overall Average Stipend **Rs. 1,25,027**

Overall average Stipend in Rs.

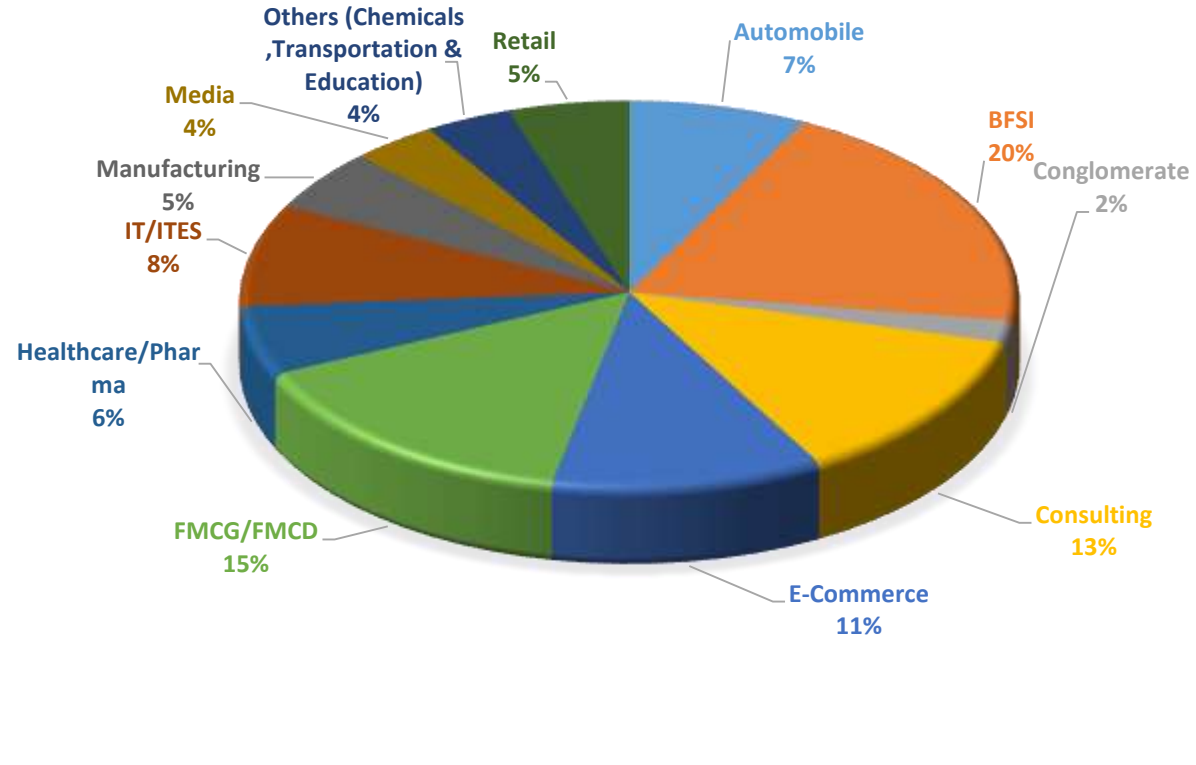
Top 50	2,14,600
Top 100	1,75,611
Top 150	1,50,274
Top 200	1,31,856

Some of the prominent recruiters:

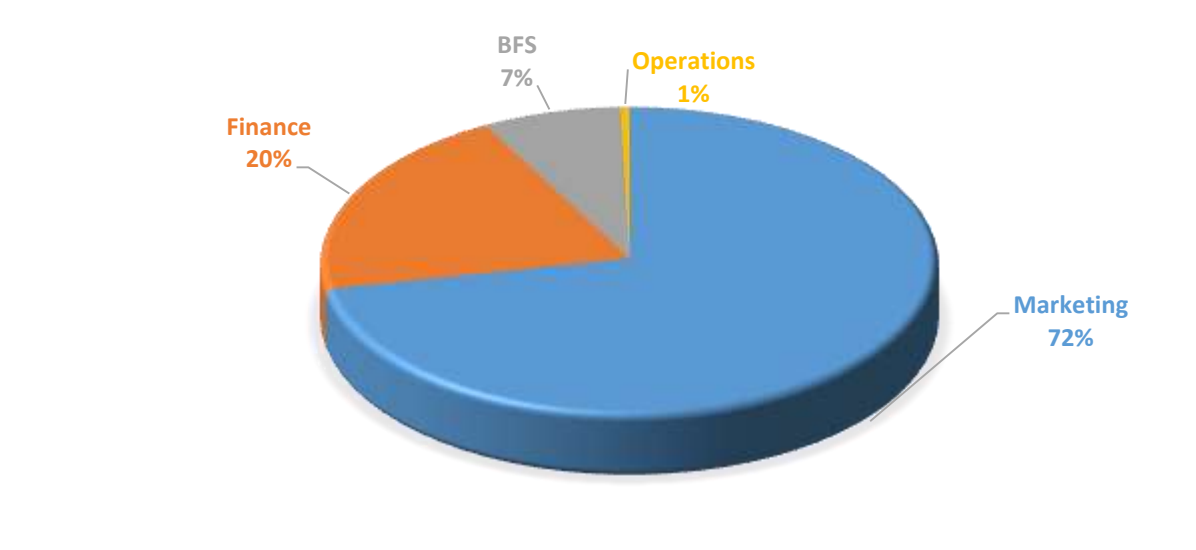
Abbott
ABFRL
Adani Enterprises Limited
AkzoNobel
Analytics Quad4 India Pvt Ltd
Apollo Tyres
Arcesium
Ascent Health And Wellness Solutions
Ather Energy
Bajaj Auto Ltd
Becton Dickinson
BlackRock
BMW
Bosch India
CarWale
Casio
Cisco Systems India Pvt. Ltd.
Compass Group
Credit Suisse
D.E. Shaw
Dare2 Compete
DCM Shriram
Dell Technologies
DMI Finance
Elastic Run
Emami Group
FieldFresh Foods Pvt Ltd.
GEP Solutions Pvt. Ltd.
Godrej Consumer Products Limited
Goldman Sachs Services Pvt. Ltd.
Google

Grofers
Hewlett Packard
HSBC Bank
IBM India
InfoEdge India
ITC Limited
Juspay
Larsen & Toubro Technological Services
Larsen & Toubro
LensKart
Macquarie Group
Mahindra & Mahindra
Marico
Maruti Suzuki
Max Life Insurance
Metro Cash & Carry
Michelin
Next Education
NinjaCart
Nivea
Novartis
Olam
People Interactive
Perfetti Van Melle
PharmaAce
PharmEasy
Piramal
Royal Bank of Scotland
Safari Industries
Sesa care Pvt. Ltd.
Signify Innovations India Limited
Silverdale Capital
SMC Corporation Ltd.
Snaptrude
Tata Global Beverages
Titan
Ultratech Cement
United Breweries
ValueLabs
VIP Industries Ltd.
WedMe Good
Wipro CCL

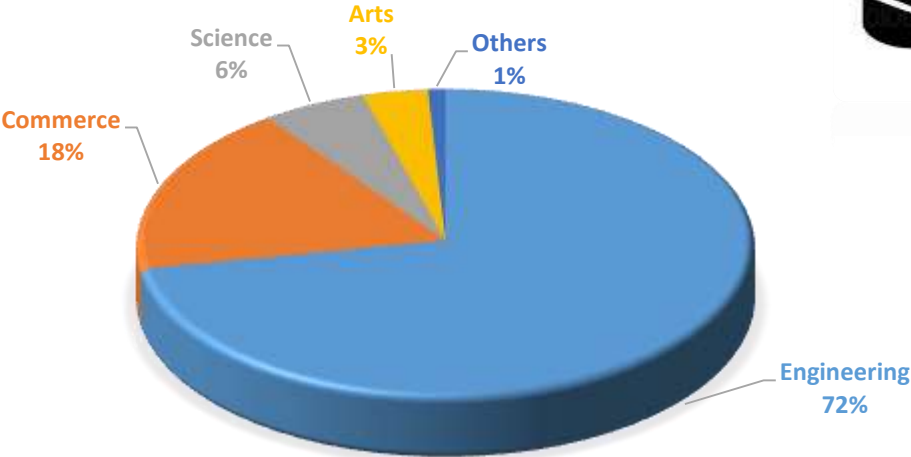
INDUSTRY WISE NO. OF OFFERS



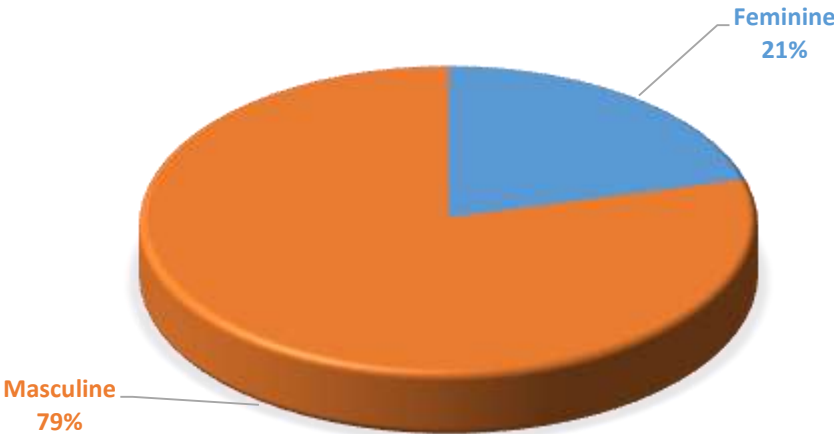
SPECIALIZATION IN PGDM



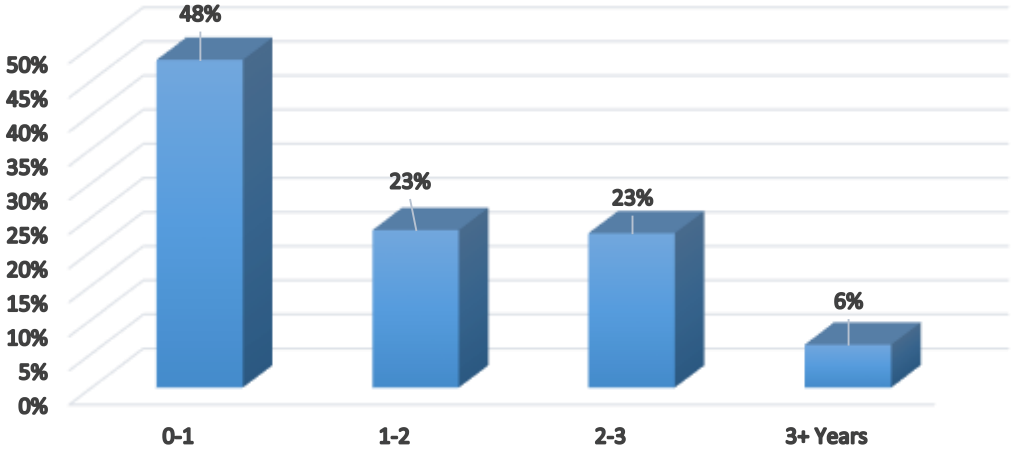
SPECIALIZATION IN GRADUATION



GENDERS



Work Exp.



Age (in Years)

